



V00.170724

ichroma™ NT-proBNP Brochure

- High sensitive Immunoassay
- Fast result
- Easy interpretation



NT-proBNP

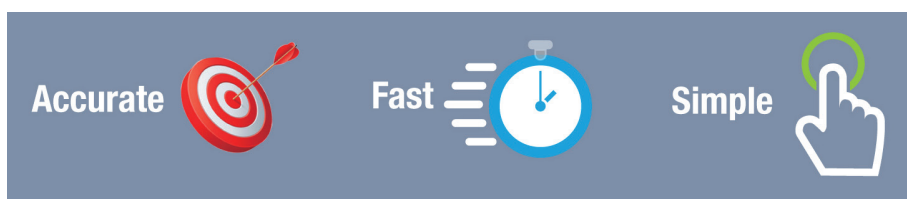
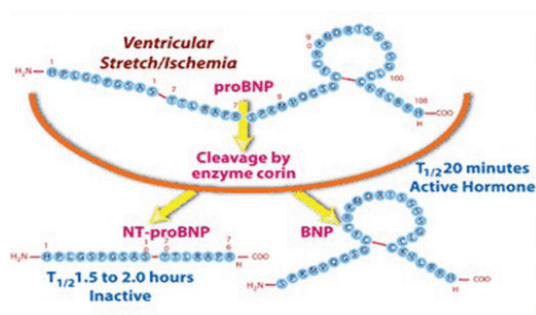
ichroma™ NT-proBNP is the high accuracy quantitative cardiac marker NT-proBNP test solution.

ichroma™ NT-proBNP is a quantitative analytic reagent for the NT-proBNP test based on high sensitivity fluorescence immunoassay (FIA).

ichroma™ NT-proBNP provides the accuracy of auto-analyzer test.



NT-proBNP immunoassays are widely used and are now considered to be a useful marker and have a high degree of diagnostic accuracy in clinical practice and cardiovascular research as a diagnostic tool for the occurrence and severity of heart failure (HF). Therefore NT-proBNP measurements in human blood are helpful not only for the cardiac disease diagnosis but also for evaluation of patients with suspected HF and assessment of severity of the disease.



Advantages of using NT-proBNP tests

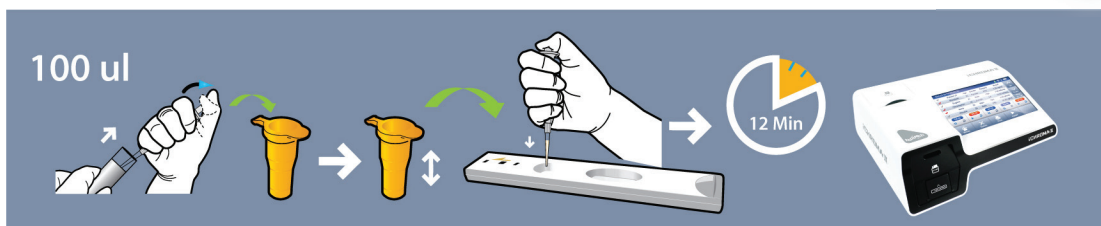
NT-proBNP assays provide several advantages, both to clinicians and patients:

- Helping to assess the patient's condition with greater sensitivity and specificity along with clinical examination
- Reducing the decision time, allowing quicker treatment initiation
- Eliminating unnecessary procedures or therapies, thereby reducing costs
- Decreasing the need for unwarranted electrocardiograms
- Reducing the number of hospital admissions
- Lowering median length of hospital stay



NT-proBNP

ichroma™ NT-proBNP test procedure



Performance

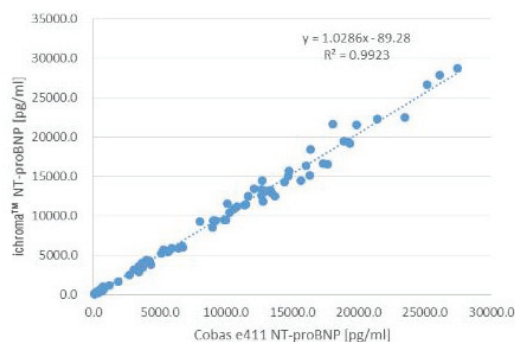


Figure 1 Correlation ichroma™ NT-proBNP against Roche Cobas e411 NT-proBNP.

Specification

	ichroma™ NT-proBNP
Sample type	WB/S/P (EDTA, Heparin only)
Sample vol.	100 µL
Assay time	12 min
Working range	10-30,000 pg/mL
Performance	CV < 10%
Storage	2-8°C for DB / 4-30°C for Cartridge
Shelf life	20 Month

Ordering information

item	Cat #	Test/Kit
ichroma™ NT-proBNP	CFPC-49	25T/Kit

Respect for life



Boditech Med Inc.

43, Geodudanji 1-gil, Dongnae-myeon, Chuncheon-si, Gang-won-do, Korea

Tel: +82-33-243-1400 Fax: +82-33-243-9373

www.boditech.co.kr/eng