



Is it COVID-19,
Flu or RSV?

AFIAS Respiratory Solutions

Precisely identify your virus for optimal care

- AFIAS COVID-19 Ag
- AFIAS Flu A+B
- AFIAS RSV
- AFIAS COVID-19/Flu Ag
- AFIAS COVID-19/Flu A+B/RSV Ag



AFIAS

Trustworthy

On-site testing

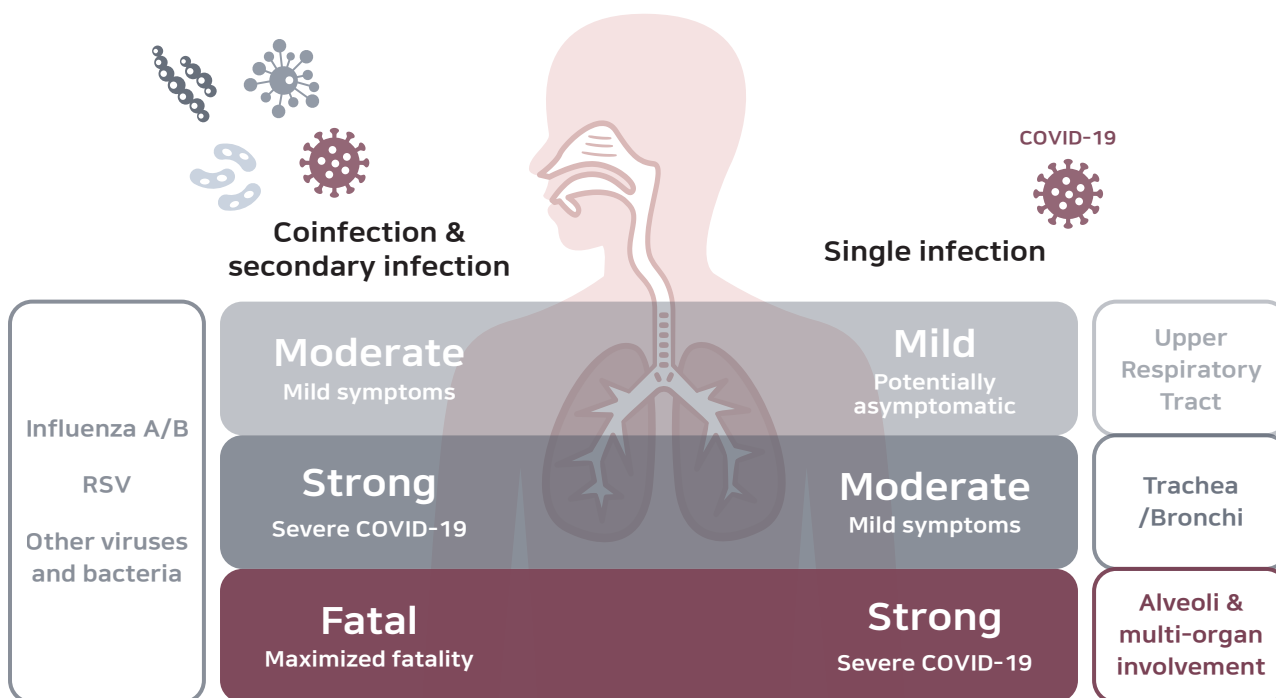
User-friendly

COVID-19, FLU, and the RSV have similar cold-like symptoms, making it hard to tell them apart just by how you feel. So, getting the right test is important for the right treatment.

SYMPTOM	COVID-19	FLU	RSV
LENGH OF SYMPTOMS	Gradual	Sudden	Gradual
COUGH	✓	✓	✓
DIARRHEA	Sometimes	Sometimes*	Rare
FATIGUE OR TIREDNESS	✓	✓	Sometimes
FEVER	✓	✓	✓
HEADACHE	Sometimes	✓	✓
LOSS OF TASTE AND SMELL	✓	Rare	Rare
MUSCLE OR BODY ACHES	Sometimes	✓	Rare
RUNNY OR CONGESTED NOSE	✓	✓	✓
SHORTNESS OF BREATH	✓	Rare	Sometimes
SNEEZING	✓	✓	✓
SORE THROAT	✓	✓	✓
VOMITING	Sometimes	Sometimes*	Rare
WHEEZING	Rare	Rare	Sometimes

* MORE COMMON IN CHILDREN / SOURCE: CDC, MAYO CLINC

- **Viral coinfection** can rise the difficulties of diagnosis, treatment, progression of COVID-19 and even increase the disease symptom and mortality. ^[1]
- According to CDC data, approximately 6% of pediatric patients hospitalized with influenza had a SARS-CoV-2 co-infection, and **co-infected** patients were more likely to require respiratory support and also more likely to die than single-infected patients. ^[2]



Increased risk of coinfection of **COVID-19** with other respiratory infections

AFIAS Respiratory Solutions

Effectively solve these challenges



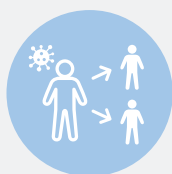
Misdiagnosis

If it is misdiagnosed due to lesions and symptoms similar to those of respiratory diseases, timely and appropriate treatment is not possible.



Increased mortality

COVID-19 co-infected patients have a mortality rate of 5.92 times higher than those of negative people and 2.27 times higher than those with a single infection. ^[3]



Contagion

Due to the delayed judgment for quarantine, the time to block the spread of the disease may be missed.

Specification and performance

Respiratory panels	COVID-19 Ag	Flu A+B	RSV	COVID-19/Flu Ag			COVID-19/Flu A+B/RSV Ag				
Principle	Time-resolved fluorescent lateral flow assay (TRF-LFIA)										
Reaction time	12 min	10 min		20 min			20 min				
Sample type	Nasopharyngeal swab										
Output data	Positive(+), Negative(-), or invalid										
Analyzer	AFIAS-1, AFIAS-3, AFIAS-6, AFIAS-10										
Clinical Performance											
	COVID-19 Ag	Flu A	Flu B	RSV	COVID-19 Ag	Flu A	Flu B	COVID-19 Ag	Flu A	Flu B	RSV
Sensitivity (%)	91.9	98.6	96.0	96.0	96.8	96.9	93.8	95.0	95.0	91.4	95.0
Specificity (%)	98.8	100	100	99.1	100	100	100	99.4	98.8	100	99.4

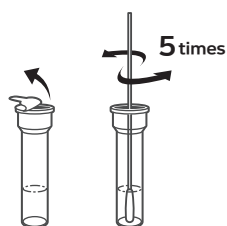
• Reference tests

- RT-PCR: COVID-19 Ag, Influenza A+B, RSV

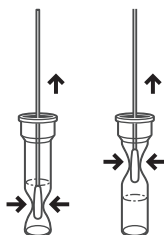
Test Procedures

3 simple steps

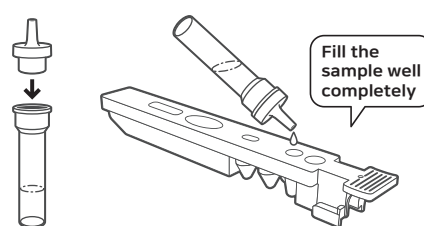
- 1 Inserting the swab sample into the extract buffer



- 2 After mixing thoroughly, remove the swab



- 3 Inserting the sample into the cartridge



Measurement



AFIAS-1



AFIAS-3



AFIAS-6



AFIAS-10

Ordering information

Product	Cat.No	Contents	Shelf life
AFIAS-1	FPRR019	Set	-
AFIAS-3	FPRR040	Set	-
AFIAS-6	FPRR020	Set	-
AFIAS-10	FPRR038	Set	-
AFIAS COVID-19 Ag	SMFP-71	24 T/box	20 months
AFIAS Flu A+B	SMFP-68	24 T/box	18 months
AFIAS RSV	SMFP-126	24 T/box	18 months
AFIAS COVID-19/Flu Ag	SMFP-77	24 T/box	20 months
AFIAS COVID-19/Flu A+B/RSV Ag	SMFP-113	24 T/box	20 months

References

- 1) Chen X et. al., The microbial coinfection in COVID-19 (2020). Appl Microbiol Biotechnol. 104(18): 7777. doi: 10.1007/s00253-020-10814-6. PMID: 32780290
- 2) Adams K et. al., Prevalence of SARS-CoV-2 and Influenza Coinfection and Clinical Characteristics Among Children and Adolescents Aged <18 Years Who Were Hospitalized or Died with Influenza - United States, 2021-22 Influenza Season. MMWR Morb Mortal Wkly Rep. 2022 Dec 16;71(50):1589-1596. doi: 10.15585/mmwr.mm7150a4. PMID: 36520656; PMCID: PMC9762905.
- 3) Iacobucci G. Covid-19: Risk of death more than doubled in people who also had flu, English data show. BMJ. 2020 Sep 23;370:m3720. doi: 10.1136/bmj.m3720. PMID: 32967850.