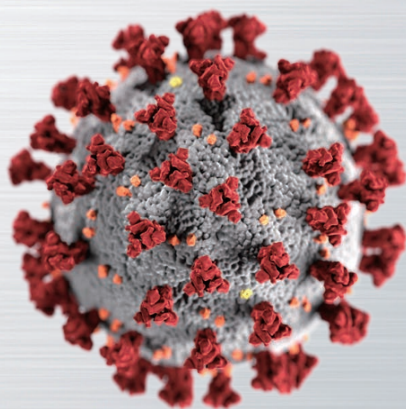


Total solutions for the diagnosis of **COVID-19**



Boditech Med Inc.

COVID-19 outbreak

SARS-CoV-2 (COVID19), the newly identified coronavirus 2019-nCoV, causes pneumonia so that prevention and control of the infection has become highly required. So far, tens of millions have been infected and the following huge economic impact shakes global medical and social fundamentals. Since symptoms become rapidly severe without proper treatment after the onset of illness, early diagnosis of the virus infection is quite crucial.

Boditech Med Inc. is a leader in the *in-vitro* diagnostic area and provides total solution of COVID-19 diagnosis that can be used in any environment. Boditech Med manufactures 65 different kinds of diagnostic cartridges and 9 instruments to be used in the field such as cardiac, diabetes, hormones, infection, so on. In addition, we now provide;

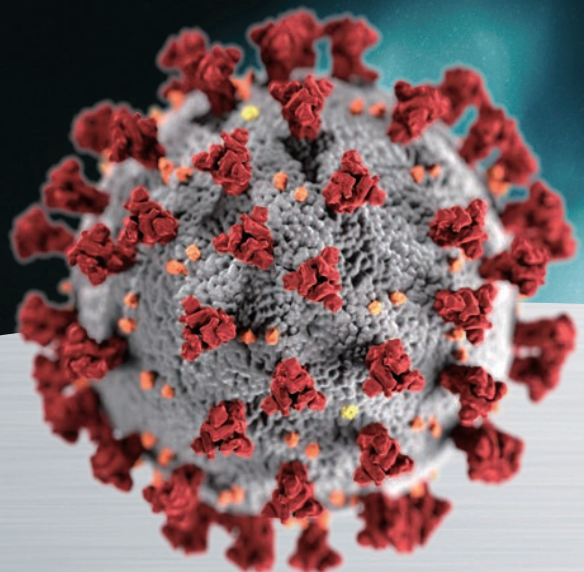
- COVID-19 quick antigen/antibody kits optimized for on-site diagnosis with high accuracy
- COVID-19/Influenza antigen combo test for distinguishing COVID-19 and Influenza in symptomatic patients
- Molecular diagnostics for confirmatory testing
- Nucleic acid extraction kits essential for molecular diagnostic pretreatment
- Interleukin-6 test for the identification of patients with confirmed COVID-19 diseases who could be a high risk
- D-Dimer/Ferritin/PCT as biomarkers of disease severity in COVID-19 patients

Boditech Med Inc. will do its best to prevent and diagnose the COVID-19.



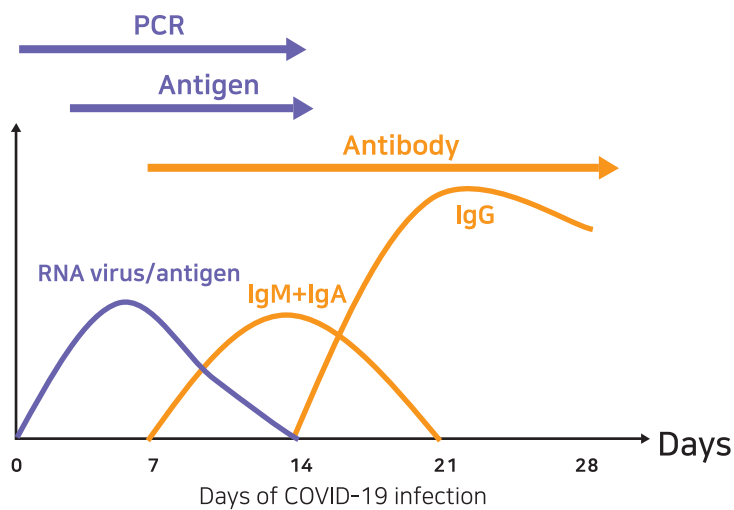
Index

ExAmpliar/NuActor	6p
ExAmplex	7p
ichroma™ COVID-19 Ag	8p
AFIAS COVID-19 Ag	9p
ichroma™ COVID-19 Ab	10p
AFIAS COVID-19 Ab	11p
ichroma™ COVID-19/Flu Ag Combo	12p
AFIAS COVID-19/Flu Ag Combo	13p
ichroma™ IL-6	14p
AFIAS IL-6	15p
ichroma™ D-Dimer	16p
AFIAS D-Dimer	17p
ichroma™ Ferritin	18p
AFIAS Ferritin	19p
ichroma™ PCT Plus	20p
AFIAS PCT Plus	21p
AFIAS-6/ichroma™ II	22p
AFIAS-1/ichroma M2	23p





Product selection guide for the diagnosis of COVID-19 infection



PCR



NuActor

ExAmplar

Antigen



ichroma™ / AFIAS

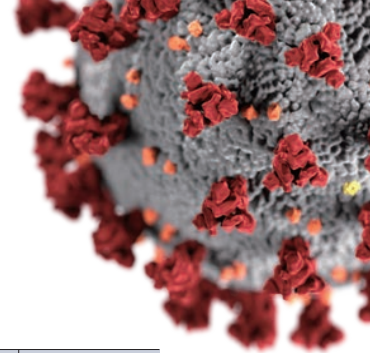
Antibody



ichroma™ / AFIAS



Total solutions for the diagnosis of **COVID-19**



List of products for the diagnosis of COVID-19

Category	Product	Catalog No.	Storage
PCR	ExAmplar COVID-19 Real-time PCR kit	UFPK-4	2 - 25 °C
	ExAmplex Influenza A/B SARS-CoV-2 PCR kit	UFPK-6	2 - 8 °C
	ExAmplex SARS-CoV-2 3 gene PCR kit*	-	2 - 8 °C
Nucleic acid extraction	NuActor Viral RNA extraction kit	UFPK-1	15 - 35 °C
COVID-19 Antigen	ichroma™ COVID-19 Ag	CFPC-115	2 - 30 °C
	AFIAS COVID-19 Ag	SMFP-71	4 - 30 °C
COVID-19 Antibody	ichroma™ COVID-19 Ab	CFPC-114	2 - 30 °C
	AFIAS COVID-19 Ab	SMFP-72	4 - 30 °C
COVID-19/Influenza Antigen Combo	ichroma™ COVID-19/Flu Ag Combo	CFPC-117	2 - 30 °C
	AFIAS COVID-19/Flu Ag Combo	SMFP-77	2 - 30 °C

* Coming soon

List of COVID-19 related products

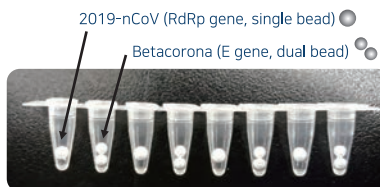
Category	Product	Catalog No.	Storage
Interleukin-6	ichroma™ IL-6	CFPC-116	4 - 30 °C
	AFIAS IL-6	SMFP-74	2 - 8 °C
D-Dimer	ichroma™ D-Dimer	CFPC-25	Cartridge: 4 - 30 °C DB: 2 - 8 °C
	AFIAS D-Dimer	SMFP-4	2 - 8 °C
Ferritin	ichroma™ Ferritin	CFPC-32	Cartridge: 4 - 30 °C DB: 2 - 8 °C
	AFIAS Ferritin	SMFP-23	2 - 8 °C
PCT	ichroma™ PCT Plus	CFPC-64	Cartridge: 4 - 30 °C DB: 2 - 8 °C
	AFIAS PCT Plus	SMFP-32	2 - 8 °C

Instruments

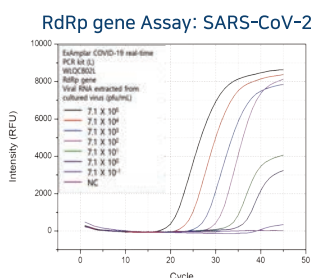
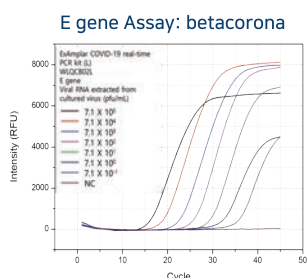
Category	Product	Catalog No.
PCR machine	ExAmplar	FPRR030
Nucleic acid extraction	NuActor	FPRR032
ichroma™	ichroma™ II	FPRR021
	ichroma™ M2	FPRR037
AFIAS	AFIAS-6	FPRR020
	AFIAS-1	FPRR019

ExAmplar COVID-19 real-time PCR kit (L)

- Easy shipping & delivery (No dry ice needed)
- Ambient temperature storage (2-25 °C)
- Fast, Small and Cost Effective
- Exclusive Reagent (closed system)
- 8 tests/run (3 controls + 5 samples)
- 30 mins (DNA)/45 mins (RNA)
- Size : 20 cm × 24 cm × 18 cm
- Fully lyophilized, ready-to-use real-time PCR kit
- Open kit: test with ExAmplar or any conventional real-time PCR machines
- Controls included
- Sensitivity to <20 copies/rxn



Performance Data Analytical Sensitivity



	Limit of Detection	95% confidence interval (CI)
E gene	5.2 copies/μL	4.2 ~ 7.2 copies/μL
RdRp gene	15.1 copies/μL	12.5 ~ 19.6 copies/μL

Components

Components	Quantity
Reaction tube (lyophilized)	12 tubes (48 tests/kit)
Resuspension buffer	2 vials (1.5 mL x 2)
Positive control	1 vial
Negative control	1 vial

Ordering Information

Product	Cat. No.
ExAmplar	FPRR030
ExAmplar COVID-19 real-time PCR kit (L)	UFPK-4

NuActor Automatic Extractor

- Extraction Time < 15 mins
- From Sample 200 μL
- Exclusive Cartridge System
- Magnetic bead method
- Full Automated
- UV sterilization
- Size : 24 cm × 24 cm × 26 cm

NuActor Viral RNA extraction kit



Components

Components	Quantity
Extraction cartridges	12 ea
2X lysis buffer (20 mL)	2 bottles
Disposable strip-cap	12 ea

Ordering Information

Product	Cat. No.
NuActor	FPRR032
NuActor Viral RNA extraction kit	UFPK-1

Influenza A/B SARS-CoV-2 PCR kit

- Multiplex Single tube detection (Flu A, Flu B, COVID-19)
- Ready-to-use Add water & RNA extract and RUN
- Lyophilized Ambient temp. shipping (no dry ice)



• Compatible instruments



Bio-Rad
'CFX96' Real Time PCR



Thermo Fisher
'ABI7500 Fast' Real Time PCR

• Components

Components	Quantity
Reaction tube (lyophilized)	12 tubes (96 tests/kit)
Nuclease-free water	2 vials (1.5 mL x 2)
Positive control	1 vial (dried pellet)
Instructions for use	1 ea

• Ordering Information

Product	Cat. No.
ExAmplex Influenza A/B SARS-CoV-2 PCR kit	UFPK-6
ExAmplex SARS-CoV-2 3 gene PCR kit	Coming soon

• Clinical Performance (ExAmplex Influenza A/B SARS-CoV-2 PCR kit)

Influenza A virus	Reference (Real-Q Flu A, B Detection Kit)		
	Positive	Negative	Total
Positive	33	0	33
Negative	0	118	118
Total	33	118	151
ExAmplex Influenza A/B SARS-CoV-2 PCR Kit	Sensitivity	100% (95%CI: 87.0% ~ 100%)	
	Specificity	100% (95%CI: 96.1% ~ 100%)	
	PPV	100% (95%CI: 87.0% ~ 100%)	
	NPV	100% (95%CI: 96.1% ~ 100%)	

SARS-CoV-2	Reference (STANDARD M nCoV Real-Time Detection kit)		
	Positive	Negative	Total
Positive	31	0	31
Negative	0	120	120
Total	31	120	151
ExAmplex Influenza A/B SARS-CoV-2 PCR Kit	Sensitivity	100% (95%CI: 86.3% ~ 100%)	
	Specificity	100% (95%CI: 96.1% ~ 100%)	
	PPV	100% (95%CI: 86.3% ~ 100%)	
	NPV	100% (95%CI: 96.1% ~ 100%)	

Influenza B virus	Reference (Real-Q Flu A, B Detection Kit)		
	Positive	Negative	Total
Positive	35	0	35
Negative	0	116	116
Total	35	116	151
ExAmplex Influenza A/B SARS-CoV-2 PCR Kit	Sensitivity	100% (95%CI: 87.7% ~ 100%)	
	Specificity	100% (95%CI: 96.0% ~ 100%)	
	PPV	100% (95%CI: 87.7% ~ 100%)	
	NPV	100% (95%CI: 96.0% ~ 100%)	

• Analytical sensitivity (LOD)

Influenza A : 4.96 cp/rxn (95% CI 3.11~7.92 cp/rxn)

Influenza B : 34.06 cp/rxn (95% CI 25.52~45.44 cp/rxn)

SARS-CoV-2 : 6.79 cp/rxn (95% CI 3.46~13.32 cp/rxn)

• Evaluation performed in U2bio clinical laboratory, Korea

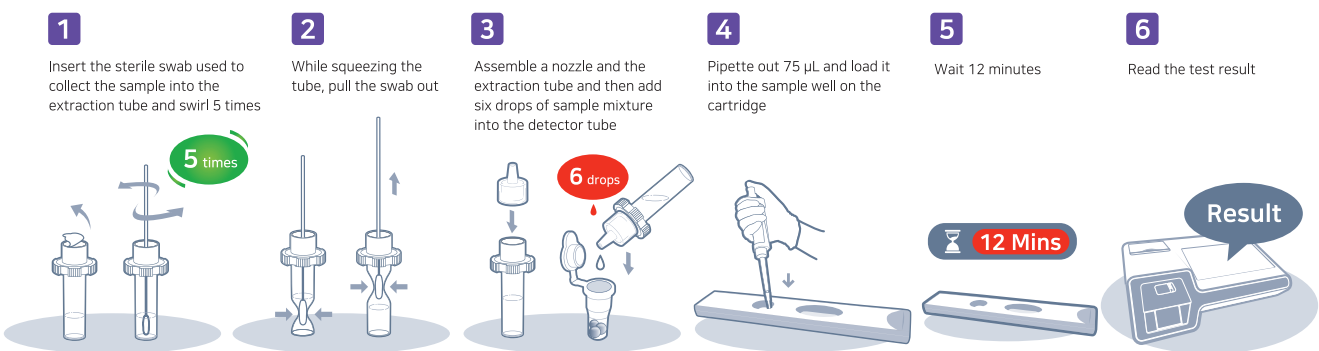
ichroma™ COVID-19 Ag

ichroma™ COVID-19 Ag is a fluorescence Immunoassay (FIA) for the qualitative detection of novel coronavirus (SARS-CoV-2, 2019-nCoV) in a human nasopharyngeal swab. It is helpful as an aid in the screening of early mild, asymptomatic, or acute patients for identification of 'Novel Coronavirus' infection.

* For *in-vitro* diagnostic use only.



• Test procedure



• Components

- Cartridge
- Detector tube
- Extraction tube
- Nozzle
- ID Chip



• Ordering Information

Product	Cat. No.
ichroma™ COVID-19 Ag	CFPC-115
ichroma™ II Reader	FPRR021
ichroma™ M2	FPRR037

* Note, A nylon swab is excluded from the components of the cartridge box.

• Clinical performance

		RT-PCR		
		Positive	Negative	Total
ichroma™ COVID-19 Ag	Positive	21	2	23
	Negative	3	55	58
	Total	24	57	81

- Clinical sensitivity: 87.5 %
- Clinical specificity: 96.5 %

• Specification

Product name	ichroma™ COVID-19 Ag
Assay type	TRFLFA*, COVID-19 Antigen
Sample type	Nasopharyngeal swab
Sample prep/extraction	Collecting with nylon swab
Target	COVID-19 Antigen
Platform	ichroma™ II Reader
Unit	25 kit/box

* TRFLFA: Time-resolved fluorescent lateral flow assay

AFIAS COVID-19 Ag

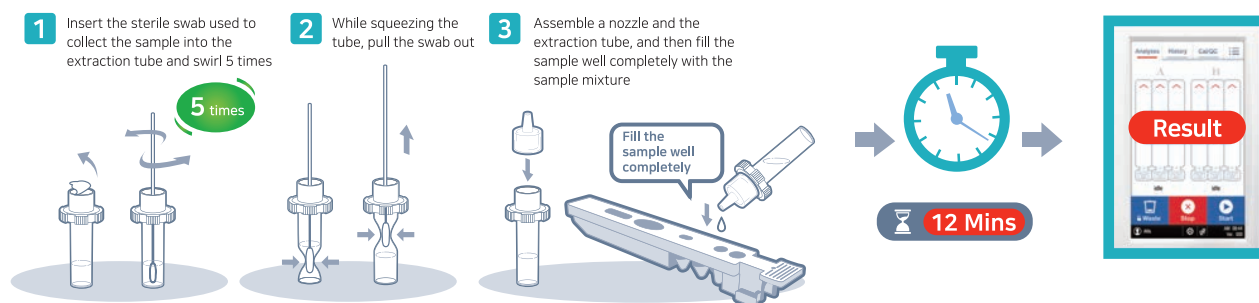
AFIAS COVID-19 Ag is an automatic fluorescence Immuno assay (FIA) for the qualitative detection of novel corona virus (eg, SARS-CoV-2, 2019-nCoV) in a human nasopharyngeal swab. It is useful as an aid in management and monitoring of SARS-CoV-2 infection (COVID-19).

* For *in-vitro* diagnostic use only.



• Test procedure

3 simple steps



• Components

- Cartridge
- Pipette tip for operation
- Extraction tube
- Nozzle
- ID Chip



• Ordering Information

Product	Cat. No.
AFIAS COVID-19 Ag	SMFP-71
AFIAS-1 Reader	FPRR019
AFIAS-6 Reader	FPRR020

* Note. A nylon swab is excluded from the components of the cartridge box.

• Clinical performance

		RT-PCR		
		Positive	Negative	Total
AFIAS COVID-19 Ag	Positive	21	2	23
	Negative	3	55	58
	Total	24	57	81

- Clinical sensitivity: 87,5 %
- Clinical specificity: 96,5 %

• Specification

Product name	AFIAS COVID-19 Ag
Assay type	TRFLFA*, COVID-19 Antigen
Sample type	Nasopharyngeal swab
Sample prep/extraction	Collecting with nylon swab
Target	COVID-19 Antigen
Platform	AFIAS 1/ 6 (Automated)
Unit	24 kit/box

* TRFLFA: Time-resolved fluorescent lateral flow assay

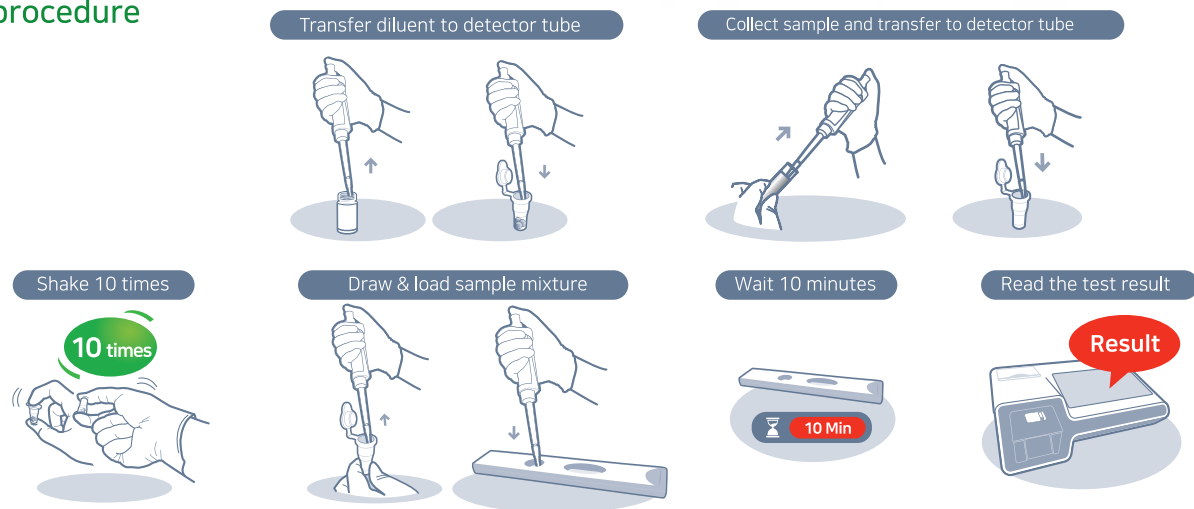
ichroma™ COVID-19 Ab

ichroma™ COVID-19 Ab is a fluorescence Immunoassay (FIA) for the qualitative detection of novel coronavirus (SARS-CoV -2, 2019-nCoV) in human whole blood/serum/plasma. It is helpful as an aid in the screening of early mild, asymptomatic, or acute patients for identification of 'Novel Coronavirus' infection.

* For *in vitro* diagnostic use only.



• Test procedure



• Components

- Cartridge
- Detector tube
- Detector diluent
- ID Chip



• Ordering Information

Product	Cat. No.
ichroma™ COVID-19 Ab	CFPC-114
ichroma™ II Reader	FPRR021
ichroma™ M2	FPRR037

• Clinical performance

		RT-PCR		
		Positive	Negative	Total
ichroma™ COVID-19 Ab	Positive	46	0	46
	Negative	0	131	131
	Intermediated	2	4	6
	Total	48	135	183

- Clinical sensitivity: 95.8 %
- Clinical specificity: 97.0 %

• Specification

Product name	ichroma™ COVID-19 Ab
Assay type	TRFLFA*, IgM/IgG
Sample type	Whole blood/Serum/Plasma
Sample prep/extraction	Tube blood
Target	Anti-viral IgM/IgG
Platform	ichroma™ II Reader
Unit	25 kit/box

* TRFLFA: Time-resolved fluorescent lateral flow assay

AFIAS COVID-19 Ab

AFIAS COVID-19 Ab is an automatic fluorescence Immunoassay (FIA) for the qualitative determination of IgG/IgM antibodies against 'Novel Coronavirus' in human whole blood/serum/plasma. It is helpful as an aid in the screening of early mild, asymptomatic or acute patients for identification of 'Novel Coronavirus (eg, SARS, 2019-nCoV)' infection with high sensitivity. Finger blood (peripheral blood; whole blood) using the unique 'all-in-one' tube, allows the patient's pain to blood collection to be relatively low and suitable for large-scale screening in the field.

* For *in-vitro* diagnostic use only.



• Test procedure

3 simple steps



Collect capillary blood



Place the C-tip in the cartridge tip hole and insert the cartridge into the slot



Press START to run the test.



• Components

- Cartridge
- Pipette tip for operation
- C-tip for collecting capillary blood
- ID Chip



• Ordering Information

Product	Cat. No.
AFIAS COVID-19 Ab	SMFP-72
AFIAS-1 Reader	FPRR019
AFIAS-6 Reader	FPRR020

• Clinical performance

		RT-PCR		
		Positive	Negative	Total
AFIAS COVID-19 Ab	Positive	46	0	46
	Negative	0	145	145
	Intermediated	2	5	7
	Total	48	150	198

- Clinical sensitivity: 95.8 %
- Clinical specificity: 96.7 %

• Specification

Product name	AFIAS COVID-19 Ab
Assay type	TRFLFA*, IgM/IgG
Sample type	Whole blood/Serum/Plasma
Sample prep/extraction	Finger-prick/Tube blood
Target	Anti-viral IgM/IgG
Platform	AFIAS 1/ 6 (Automated)
Unit	24 kit/box

* TRFLFA: Time-resolved fluorescent lateral flow assay

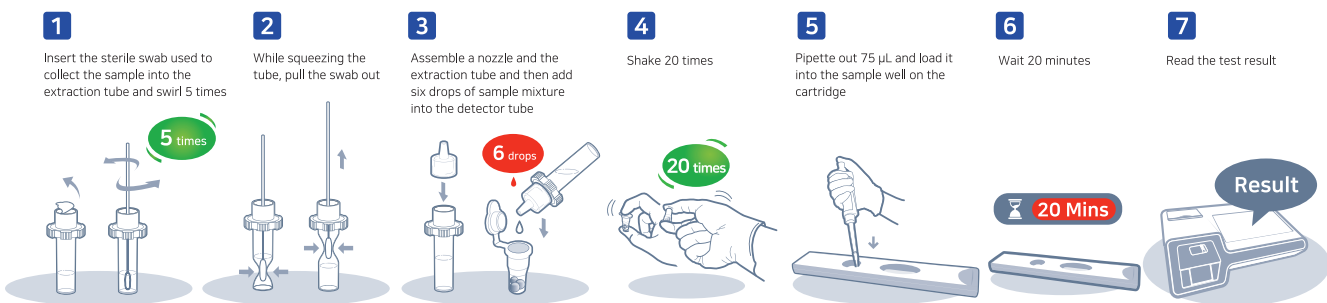
ichroma™ COVID-19/Flu Ag Combo

- Health officials caution about the twindemic with COVID-19 and Influenza in coming flu season.
- Both COVID-19 and influenza can have common symptoms with various ranges from asymmetric to severe symptoms.
- ichroma™ COVID-19/Flu Ag Combo can be diagnosed for distinguishing of COVID-19 and Influenza in patients with symptoms.

* For *in-vitro* diagnostic use only.



• Test procedure



• Components

- Cartridge
- Detector tube
- Extraction tube
- Nozzle
- ID Chip



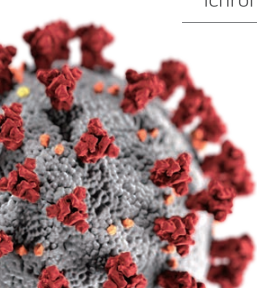
• Ordering Information

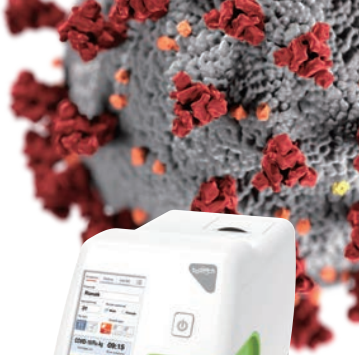
Product	Cat. No.
ichroma™ COVID-19/Flu Ag Combo	CFPC-117
ichroma™ II Reader	FPRR021

• Specification

Product name	ichroma™ COVID-19/Flu Ag Combo
Assay type	TRFLFA*
Sample type	Nasopharyngeal swab
Sample preparation	Collecting with nylon swab
Target	Antigen for COVID-19, Influenza A & B
Platform	ichroma™ II Reader
Unit	25 kit/box

* TRFLFA: Time-resolved fluorescent lateral flow assay





AFIAS COVID-19/Flu Ag Combo

- Health officials caution about the twindemic with COVID-19 and Influenza in coming flu season.
- Both COVID-19 and influenza can have common symptoms with various ranges from asymmetric to severe symptoms.
- AFIAS COVID-19/Flu Ag Combo can be diagnosed for distinguishing of COVID-19 and Influenza in patients with symptoms.

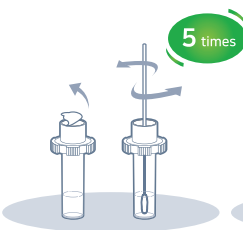
* For *in-vitro* diagnostic use only.



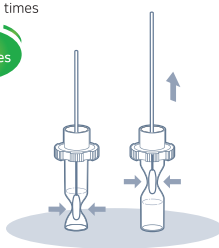
• Test procedure

3 simple steps

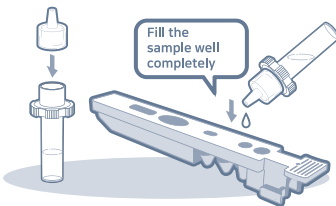
- 1** Insert the sterile swab used to collect the sample into the extraction tube and swirl 5 times



- 2** While squeezing the tube, pull the swab out



- 3** Assemble a nozzle and the extraction tube, and then fill the sample well completely with the sample mixture



• Components

- Cartridge
- Pipette tip for operation
- Extraction tube
- Nozzle
- ID Chip



• Ordering Information

Product	Cat. No.
AFIAS COVID-19/Flu Ag Combo	SMFP-77
AFIAS-1 Reader	FPRR019
AFIAS-6 Reader	FPRR020

• Specification

Product name	AFIAS COVID-19/Flu Ag Combo
Assay type	TRFLFA*
Sample type	Nasopharyngeal swab
Sample preparation	Collecting with nylon swab
Target	Antigen for COVID-19, Influenza A & B
Platform	AFIAS 1/6 (Automatic)
Unit	24 kit/box

* TRFLFA: Time-resolved fluorescent lateral flow assay

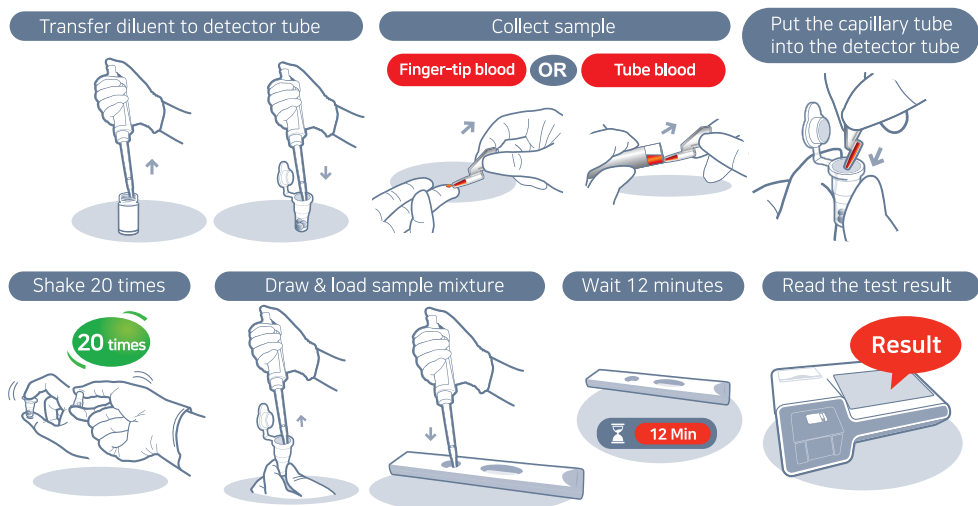
ichroma™ IL-6

- Interleukin-6 (IL-6) is an early biomarker for acute inflammation to assist in the caring of critically ill patients
- Boditech IL-6 test helps identify severe inflammatory response in patients with confirmed COVID-19.

* For *in-vitro* diagnostic use only.



• Test procedure



• Components

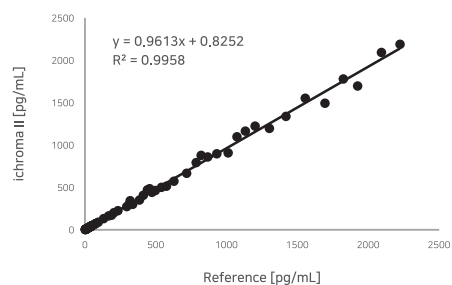
- Cartridge
- Detector tube
- Detector diluent
- Capillary tube
- ID Chip



• Ordering Information

Product	Cat. No.
ichroma™ IL-6	CFPC-116
ichroma™ II Reader	FPRR021

• Clinical performance



• Specification

Product name	ichroma™ IL-6
Assay type	TRFLFA*, IL-6
Sample type	Whole blood/Serum/Plasma
Sample preparation	Finger or heel prick/Tube blood
Target	IL-6
Platform	ichroma™ II Reader
Unit	25 kit/box

* TRFLFA: Time-resolved fluorescent lateral flow assay

AFIAS IL-6

- Interleukin-6 (IL-6) is an early biomarker for acute inflammation to assist in the caring of critically ill patients
- Boditech IL-6 test helps identify severe inflammatory response in patients with confirmed COVID-19.

* For *in vitro* diagnostic use only.



• Test procedure

3 simple steps



Collect capillary blood



Place the C-tip in the cartridge tip hole and insert the cartridge into the slot



Press START to run the test.



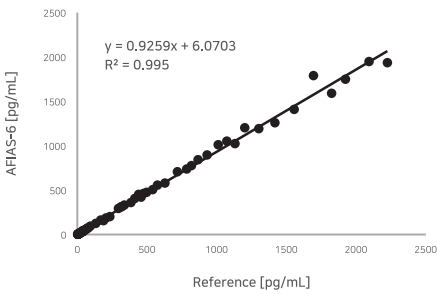
• Components

- Cartridge
- Pipette tip for operation
- ID Chip

Note, We can provide the C-tip for collecting capillary blood separately.



• Clinical performance



• Specification

Product name	AFIAS IL-6
Assay type	TRFLFA*, IL-6
Sample type	Whole blood/Serum/Plasma
Sample preparation	Finger or heel prick/Tube blood
Target	IL-6
Platform	AFIAS 1/6 (Automatic)
Unit	24 kit/box

* TRFLFA: Time-resolved fluorescent lateral flow assay

• Ordering Information

Product	Cat. No.
AFIAS IL-6	SMFP-74
AFIAS-1 Reader	FPRR019
AFIAS-6 Reader	FPRR020

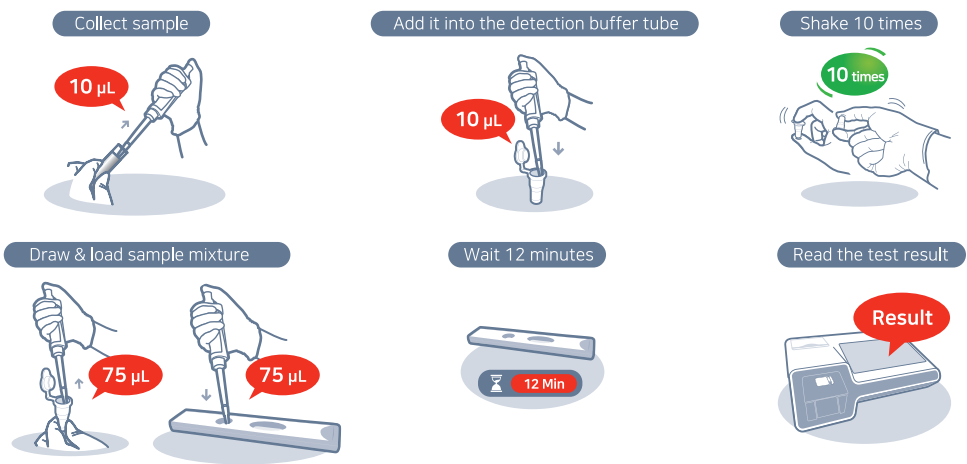
ichroma™ D-Dimer

- D-Dimer is commonly used to exclude thromboembolic disease in outpatients suspected of having deep venous thrombosis (DVT) and pulmonary embolism (PE).
- D-Dimer is well known to be an important prognostic indicator of heart diseases, its most definitive role is on monitoring post-treatment clinical status and the post-therapeutic evaluation of the patients.
- The Boditech D-Dimer test helps predict in-hospital mortality for COVID-19 patients.

* For *in vitro* diagnostic use only.



• Test procedure



• Components

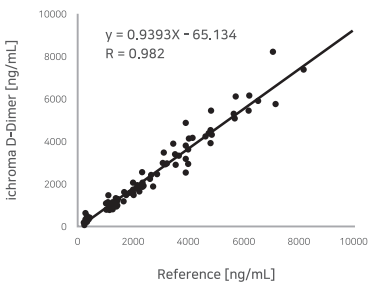
- Cartridge
- Detector tube
- ID Chip



• Ordering Information

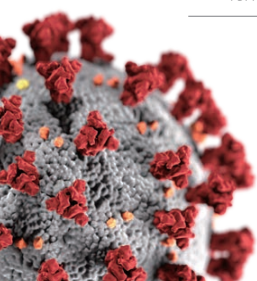
Product	Cat. No.
ichroma™ D-Dimer	CFPC-25
ichroma™ II Reader	FPRR021

• Comparability



• Specification

Product name	ichroma™ D-Dimer
Assay type	Fluorescence lateral flow assay
Sample type	Whole blood / Plasma
Sample preparation	Tube blood
Target	D-Dimer
Platform	ichroma™ II Reader
Unit	25 kit/box



AFIAS D-Dimer

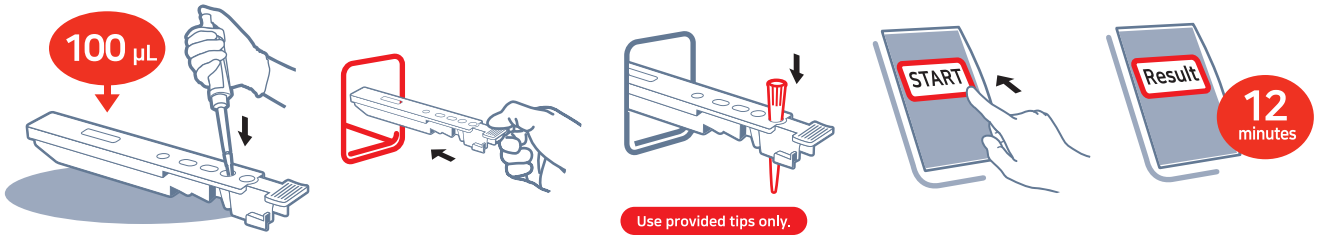
- D-Dimer is commonly used to exclude thromboembolic disease in outpatients suspected of having deep venous thrombosis (DVT) and pulmonary embolism (PE).
- D-Dimer is well known to be an important prognostic indicator of heart diseases, its most definitive role is on monitoring post-treatment clinical status and the post-therapeutic evaluation of the patients.
- The Boditech D-Dimer test helps predict in-hospital mortality for COVID-19 patients.

* For *in vitro* diagnostic use only.



• Test procedure

- 1** Take 100 µL of sample with a pipette and dispense it into the sample well on the cartridge.
- 2** Insert the cartridge fully into the cartridge holder.
- 3** Insert a tip into the tip hole of the cartridge.
- 4** To start the test, tap the 'START' icon on the screen.
- 5** The test result will be displayed on the screen in 12 minutes.

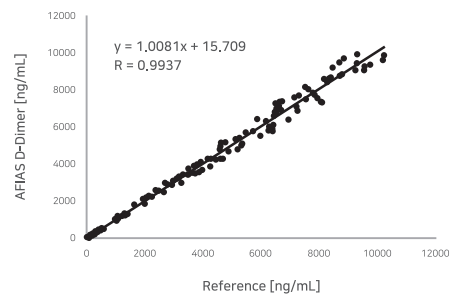


• Components

- Cartridge
- Pipette tip for operation
- ID Chip



• Comparability



• Specification

Product name	AFIAS D-Dimer
Assay type	Fluorescence lateral flow assay
Sample type	Whole blood / Plasma
Sample preparation	Tube blood
Target	D-Dimer
Platform	AFIAS 1/6 (Automatic)
Unit	24 kit/box

• Ordering Information

Product	Cat. No.
AFIAS D-Dimer	SMFP-4
AFIAS-1 Reader	FPRR019
AFIAS-6 Reader	FPRR020

* Note. A nylon swab is excluded from the components of the cartridge box.

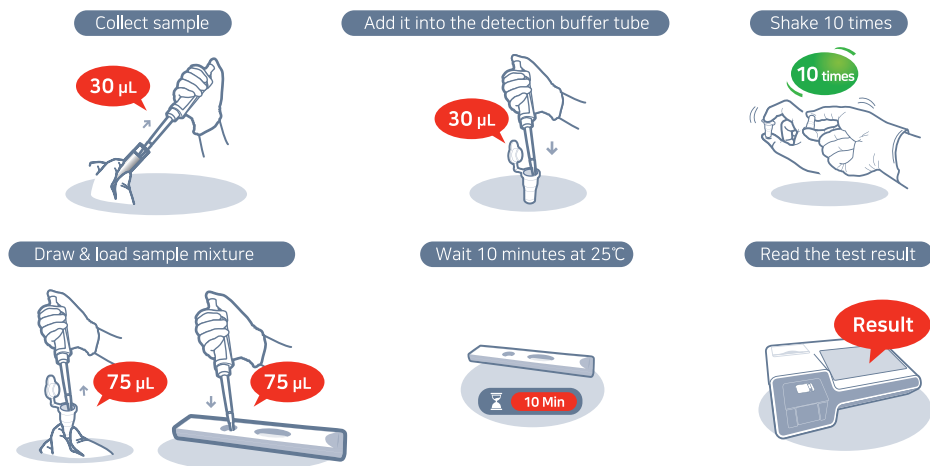
ichroma™ Ferritin

- Ferritin is the protein that can bind and store reserve iron.
- In the case of COVID-19 infection, the excess production of ferritin can occur from the macrophages through the immunoreaction.
- Ferritin can be a biomarker for the determination of severity of COVID-19 patients.

* For *in vitro* diagnostic use only.



Test procedure



Components

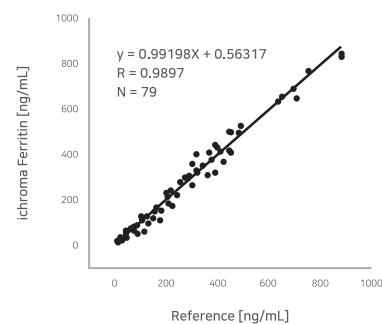
- Cartridge
- Detector tube
- ID Chip



Ordering Information

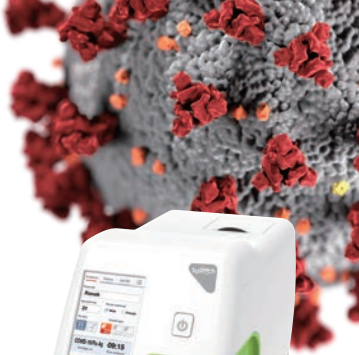
Product	Cat. No.
ichroma™ Ferritin	CFPC-32
ichroma™ II Reader	FPRR021

Comparability



Specification

Product name	ichroma™ Ferritin
Assay type	Fluorescence lateral flow assay
Sample type	Serum / Plasma
Sample preparation	Tube blood
Target	Ferritin
Platform	ichroma™ II Reader
Unit	25 kit/box



AFIAS Ferritin

- Ferritin is the protein that can bind and store reserve iron.
- In the case of COVID-19 infection, the excess production of ferritin can occur from the macrophages through the immunoreaction.
- Ferritin can be a biomarker for the determination of severity of COVID-19 patients.

* For *in vitro* diagnostic use only.



• Test procedure

1

Take 100 µL of sample with a pipette and dispense it into the sample well on the cartridge.

2

Insert the cartridge fully into the cartridge holder.

3

Insert a tip into the tip hole of the cartridge.

4

To start the test, tap the 'START' icon on the screen.

5

The test result will be displayed on the screen in 10 minutes.

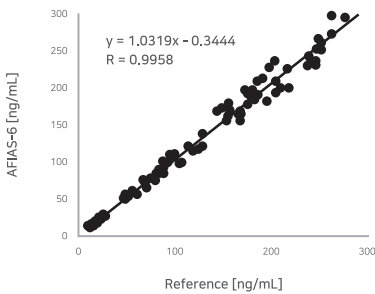
Use provided tips only.

• Components

- Cartridge
- Pipette tip for operation
- ID Chip



• Comparability



• Specification

Product name	AFIAS Ferritin
Assay type	Fluorescence lateral flow assay
Sample type	Serum / Plasma
Sample preparation	Tube blood
Target	Ferritin
Platform	AFIAS 1/6 (Automatic)
Unit	24 kit/box

• Ordering Information

Product	Cat. No.
AFIAS Ferritin	SMFP-23
AFIAS-1 Reader	FPRR019
AFIAS-6 Reader	FPRR020

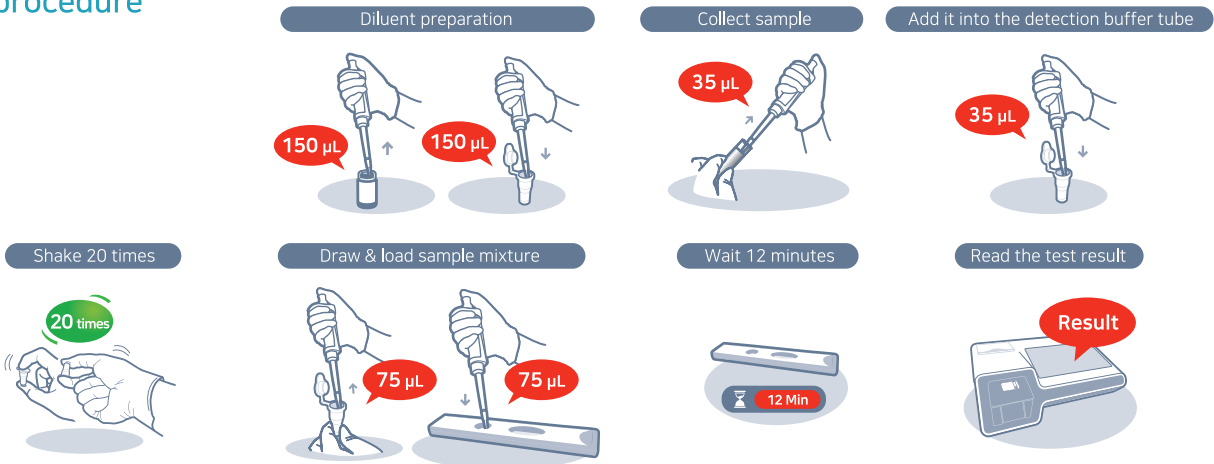
ichroma™ PCT Plus

- Procalcitonin(PCT) is the biomarker that specifically increases the level when the bacterial infection is caused in human body.
- PCT test can be useful for the exclusion of bacterial infection in COVID-19 patients and the decision of antibiotic treatment in severe COVID-19 patients.
- PCT can be a biomarker for the determination of severity of COVID-19 patients.

* For *in vitro* diagnostic use only.



• Test procedure



• Components

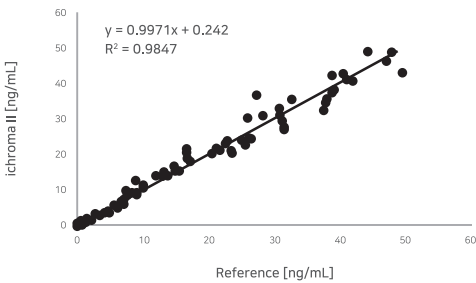
- Cartridge
- Detector tube
- Diluent
- ID Chip



• Ordering Information

Product	Cat. No.
ichroma™ PCT Plus	CFPC-64
ichroma™ II Reader	FPRR021

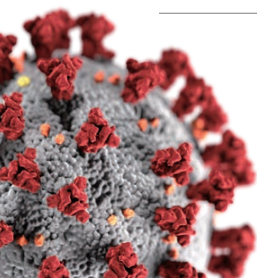
• Comparability



• Specification

Product name	ichroma™ PCT Plus
Assay type	TRFLFA*
Sample type	Whole blood/Serum/Plasma
Sample preparation	Finger or heel prick/Tube blood
Target	Procalcitonin
Platform	ichroma™ II Reader
Unit	25 kit/box

* TRFLFA: Time-resolved fluorescent lateral flow assay



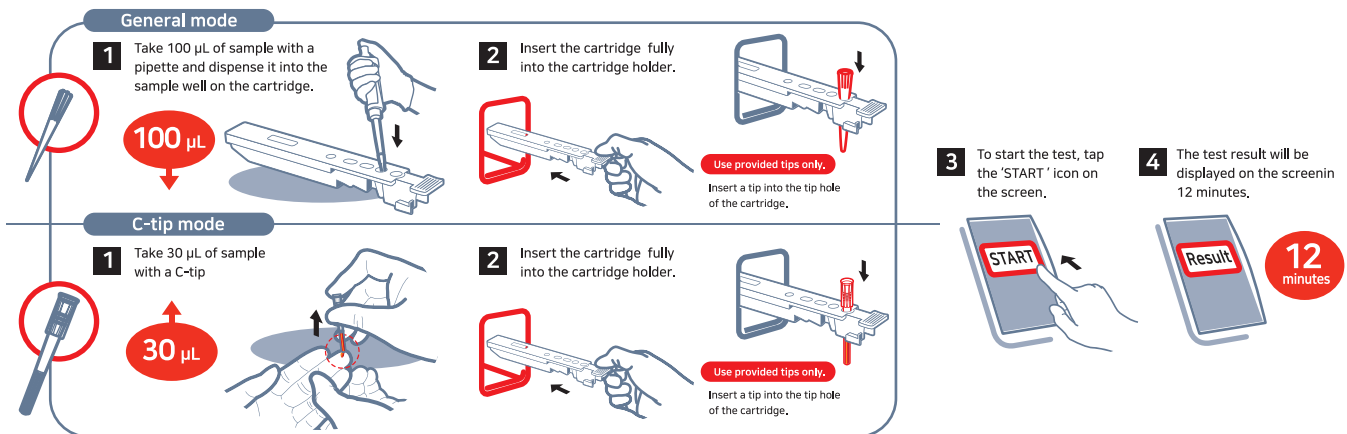
AFIAS PCT Plus

- Procalcitonin(PCT) is the biomarker that specifically increases the level when the bacterial infection is caused in human body.
- PCT test can be useful for the exclusion of bacterial infection in COVID-19 patients and the decision of antibiotic treatment in severe COVID-19 patients.
- PCT can be a biomarker for the determination of severity of COVID-19 patients.

* For *in vitro* diagnostic use only.



• Test procedure



• Components

- Cartridge
- Pipette tip for operation
- ID Chip

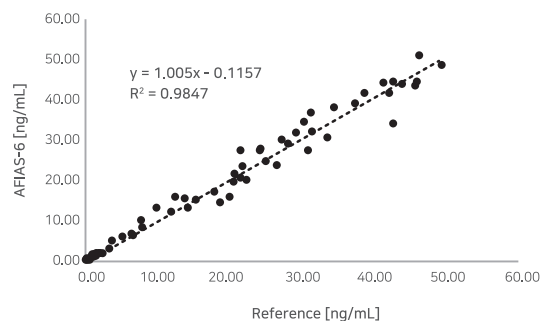
Note. We can provide the C-tip for collecting capillary blood separately.



• Ordering Information

Product	Cat. No.
AFIAS PCT Plus	SMFP-32
AFIAS-1 Reader	FPRR019
AFIAS-6 Reader	FPRR020

• Comparability



• Specification

Product name	AFIAS PCT Plus
Assay type	TRFLFA*
Sample type	Whole blood/Serum/Plasma
Sample preparation	Finger-prick/Tube blood
Target	Procalcitonin
Platform	AFIAS 1/6 (Automatic)
Unit	24 kit/box

* TRFLFA: Time-resolved fluorescent lateral flow assay

AFIAS-6

Versatile desktop immuno-analyzer

- Automated desktop analyzer
- 30 µL finger prick blood
- 6 different tests on 6 different channels
- Bay random access (2 bays)



Specifications

QC/Calibration

COVID-19 controls available

Interface

7" touch screen
Built-in thermal printer
RS 232/USB port/Ethernet/SD card slot
LIS/HIS compatible

Memory

5,000 patient results
5,000 QC results
500 ID chips
100 User IDs

Throughput

Up to 36 tests/hour

Analyzer

420 x 336 x 293 mm
15.1 kgs
100-240V AC, 50-60Hz
Internal temperature control



iCHROMA™ II

Advanced compact immuno-analyzer

- QC & system check
- Battery & AC operated
- LIS/HIS connectivity
- Multi-timer function
- USB/LAN, SD Card

Specifications

QC/Calibration

System check cartridge
COVID-19 controls available

Interface

7" touch screen
Built-in thermal printer
USB port/Ethernet/SD card slot
WiFi dongle (optional)
LIS/HIS compatible

Memory

1,000 patient results
1,000 QC results
100 User IDs

Analyzer

276 x 220 x 91 mm
1.3 kgs
100-240V AC, 50-60Hz
Battery (AA×4)



Specifications

QC/Calibration

COVID-19 controls available

Interface

5" touch screen
Built-in thermal printer
RS 232/USB port/Ethernet/SD card slot
LIS/HIS compatible

Memory

5,000 patient results
5,000 QC results
500 ID chips
100 User IDs

Throughput

Up to 10 tests/hour

Analyzer

320 x 204 x 180 mm
3.9 kgs
100-240V AC, 50-60Hz
Internal temperature control

AFIAS-1

Doctor's reliable associate

- Automated desktop analyzer
- LIS/HIS connectivity
- All-in-one cartridge
- 30 µL finger prick blood
- Walk away function



iCHROMA M2

Specialized for respiratory solution

- Handheld device
- Economical platform
- TRFLFA system-advanced technique

Specifications

QC/Calibration

System check cartridge
COVID-19 controls available

Interface

LCD display
One button operation

Analyzer

95 x 165 x 55 mm
300g
100-240V 50-60Hz, DC 5V/1A



Respect for Life



Boditech Med Inc.

43, Geodudanji 1-gil, Dongnae-myeon,
Chuncheon-si, Gang-won-do 24398, Korea

Tel: +82-33-243-1400, Fax: +82-33-243-9373

sales@boditech.co.kr / www.boditech.co.kr