

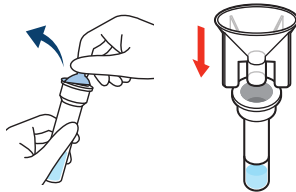
Boditech Quick[™] COVID-19 Ag Saliva

- Easy sample collection with spitting out saliva
- Getting result within 15 minutes
- Reliable test result
- No pain to children

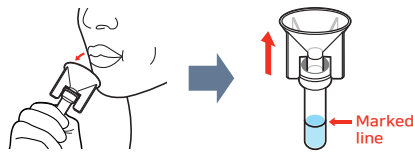


• Test procedure

- 1** Open the lid of the aluminum foil of the extraction buffer tube. Then assemble a funnel for collecting saliva to the extraction tube.

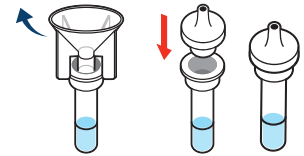


- 2** Collect saliva by moving the tongue in the mouth for 10 seconds with the mouth closed before spitting. Collect the saliva up to the marked line in the tube. Avoid sputum saliva as much as possible.



※ Be careful not to get the buffer into your mouth or swallow it.

- 3** Discard funnel and assemble a nozzle to the top of extraction buffer tube.



※ Be careful not to splash the buffer and sample when assembling the nozzle.

- 4** Shake the tube up and down more than 10 times to mix the sample and buffer.



- 5** Turn over the tube with the nozzle and add 4 drops to the cartridge sample loading well.



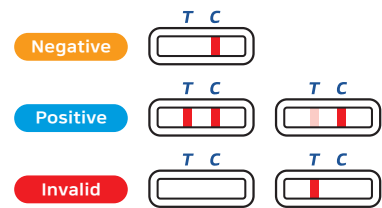
※ Do not squeeze out all of the solution in the buffer tube.

- 6** Read the test result 15 minutes after sample loading.



※ Do not interpret the result after 30 minutes.

- 7** Read the result in 10 - 15 minutes.



Strong positive results are confirmed in 10 minutes.

* Any line in the T line, faint or thick, should be considered positive result.

• Components

| | |
|------------------------|-------|
| Funnel | 25 ea |
| Cartridge | 25 ea |
| Extraction buffer tube | 25 ea |
| Nozzle | 25 ea |

• Specification

| | |
|------------------------|---|
| Product name | Boditech Quick™ COVID-19 Ag Saliva |
| Cat. No | CFPT-23 |
| Assay type | RDT (Rapid Diagnostic Test) |
| Sample type | Saliva |
| Sample prep/extraction | Collecting saliva using funnel and extraction buffer tube |
| Target | SARS-CoV-2 Antigen |
| Unit | 25 kits/box |

• Clinical performance

| | | RT-PCR | | |
|------------------------------------|----------|-----------------|----------|-------|
| | | Positive | Negative | Total |
| Boditech Quick™ COVID-19 Ag Saliva | Positive | 75 | 1 | 76 |
| | Negative | 5 | 200 | 205 |
| Total | | 80 | 201 | 281 |
| Clinical Sensitivity | | 93.8% (75/80) | | |
| Clinical Specificity | | 99.5% (200/201) | | |